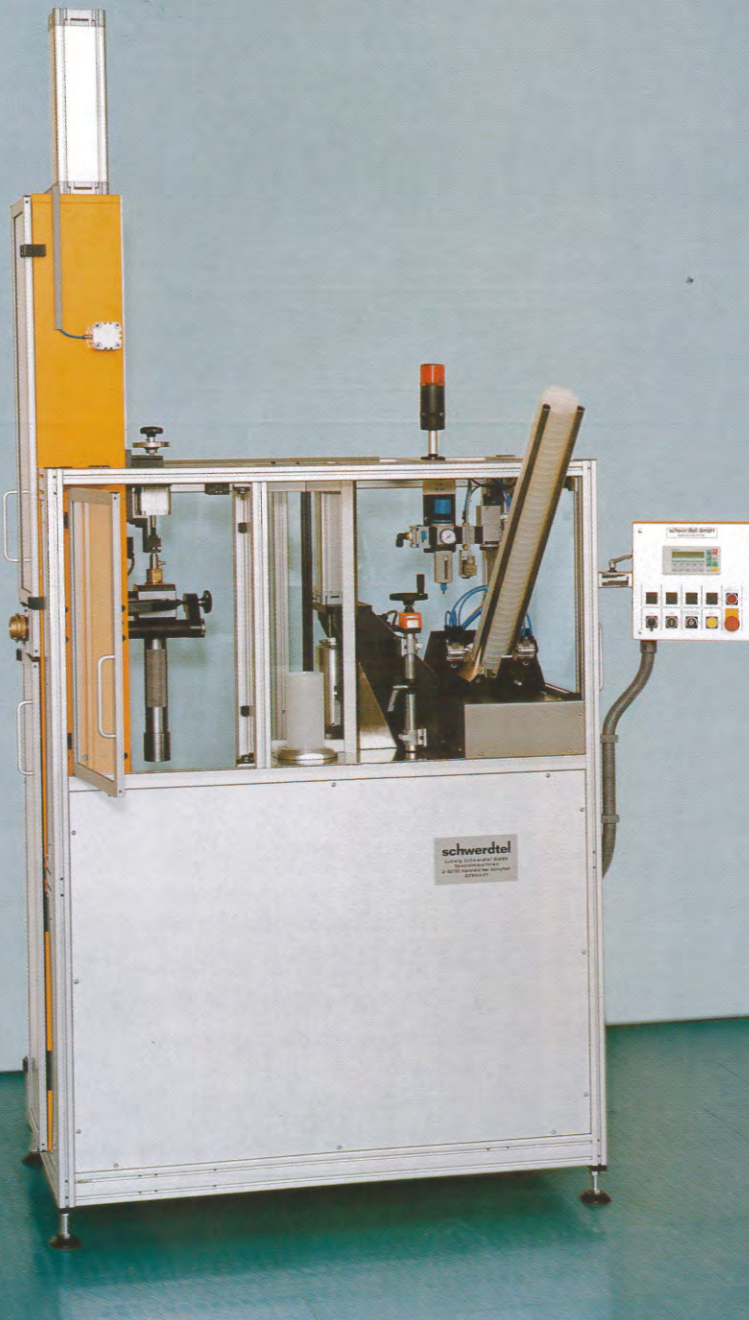


■ Semi-Automatic Vertical Cartridge Filling and Closing Machine S8-VDH

for printing inks and self-levelling products



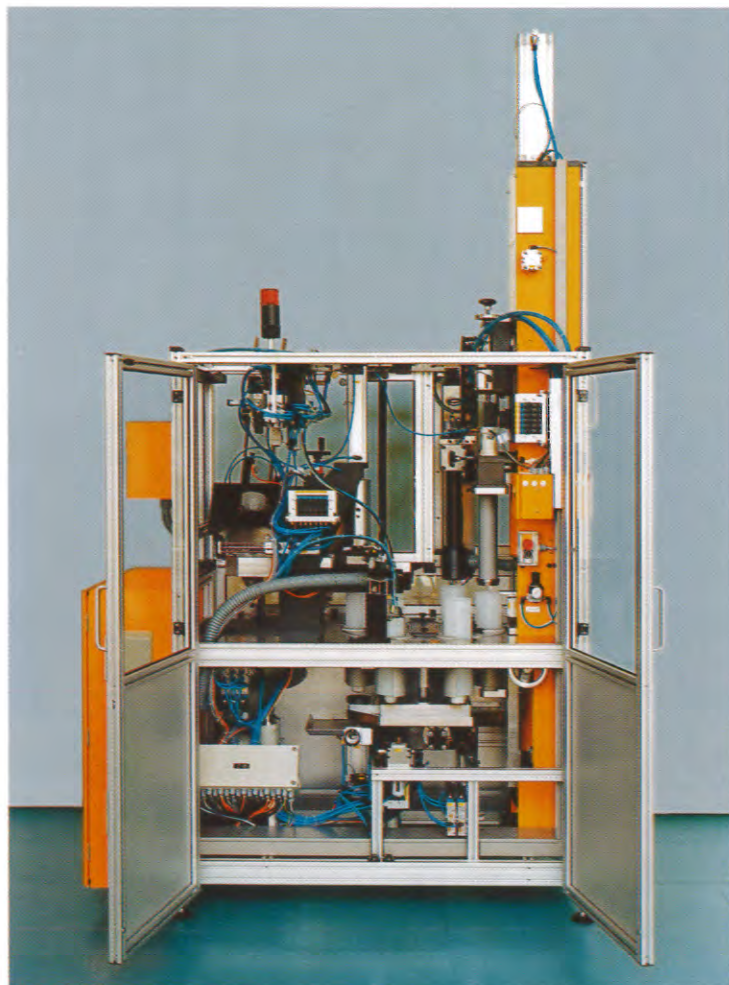
- Price advantage vs. the fully automatic version S8-VD
- Manual placing and removal of the cartridge
- Volumetric filling and automatic closing
- Output range approx. 6-10 cartridges/minute



schwerdtel

FILLING TECHNOLOGY HAS A NAME

● Cartridge filling and closing machine S8-VDH: The semi-automatic solution for the new packaging of printing ink



Cartridge filling machine

Station 1 The filled cartridge is removed and an empty cartridge is placed vertically.

A light barrier controls the correct working procedure.

Station 2 For preventing skin forming, air is replaced by nitrogen by means of a nozzle, which is inserted into the cartridge. When the nozzle is extended, anti-drying agent is sprayed onto the inside of the cartridge. Fumes are exhausted.

The necessary parts for this are optional.

First things first

- *Schwerdtel has been supplying filling and packing equipment for the printing ink industry for more than 30 years and is in the world-wide leading position in the market.*
- *Saving of personnel, high output rates and dosing precision guarantee a quick investment return.*
- *Nitrogen application and anti-drying spray device (optional) to prevent a skin forming on the product.*
- *Colour change-over in a short time.*
- *High availability due to sturdy construction, exact control of all machine functions and quick spare part supply.*

● Advantages

The cartridge filling and closing machine S8-VDH provides an air-free filling of printing inks in a volumetric way and allows a filling accuracy of +/- 0.5 g.

This technique is the optimum for plastic and cardboard cartridges with 2 kg or 5 lbs. and 8 lbs. filling weight.

- Control panel with digital display for easy service.
- For quick colour change-over all product contacted parts are easy to exchange without tools.
- State-of-the-art safety features for perfect protection for both operator and machine.

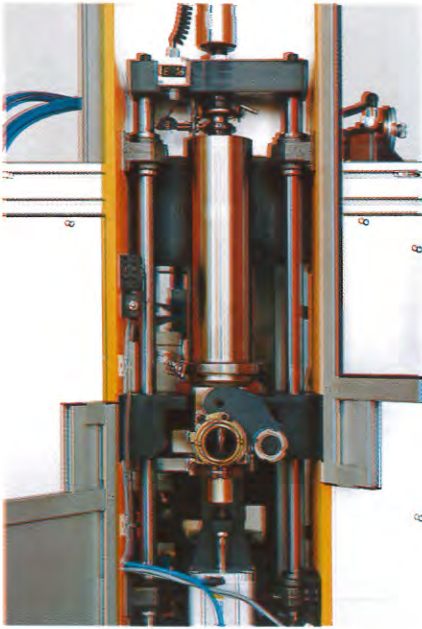
● Technology

- Sturdy construction with easy access to all working stations.
- Filling by a volumetric dosing unit with controlled lowering of the cartridge during filling.
- Electric machine control system with PLC, type Siemens S7, with fault display.

● Working procedure

The operator removes the filled cartridge, places an empty cartridge and refills the plunger magazine.

Filling and closing of the cartridge are carried out automatically by a rotary plate with 6 working stations:



Volumetric dosing unit

Station 3 The dosing stroke needed for achieving the filling weight is adjusted in accordance of colour density and can be read from a mechanical counter. In this way it is exactly and time-savingsly reproducible for the same colour or colour with the same density.

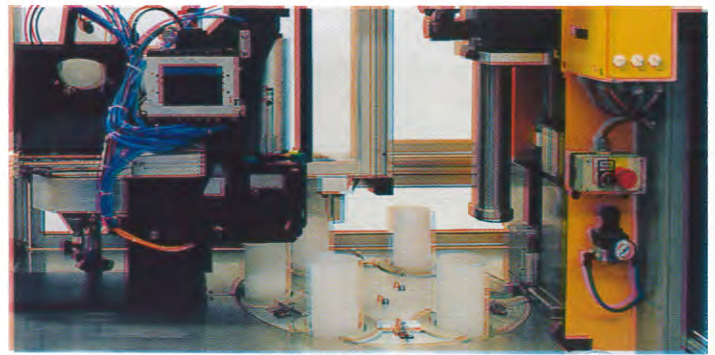
The filling is carried out by a two-step filling valve. In order to guarantee an air bubble free filling the cartridge is lifted and the cartridge valve is filled first. Then the second filling valve opens for further filling. The lowering of the cartridge during the filling procedure is synchronised with the dosing drive.

After closing of the filing valves a cut-off device cuts off the remaining product string between nozzle and colour surface.

Station 4 The filling result can be controlled visually at first adjustment.

Station 5 The surface of the filled ink is sprayed with anti-drying agent. Fumes are exhausted.

The necessary parts for this are also optional.

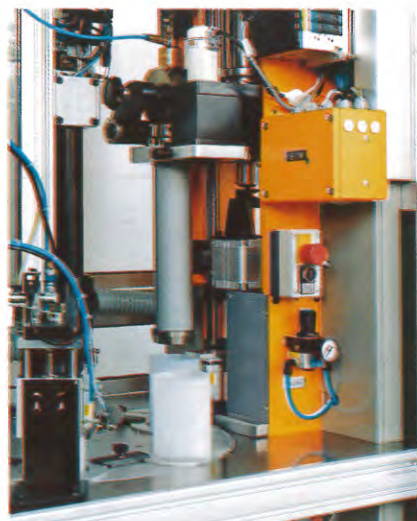


Filling and plunger closing station

Station 6 The plungers are fed automatically from a magazine with a capacity of approx. 40 pcs. to the plunger inserting station. Two venting blades made of spring steel are inserted together with the plunger into the cartridge in order to guarantee the ventilation between ink surface and plunger.

The inserting depth of the plunger is adjusted to the indicated filling height. This guarantees that no air remains between ink surface and plunger.

For easy reproduction of the inserting depth of the plunger with colours of the same density, this value can be read on a mechanical counter.



Filling station

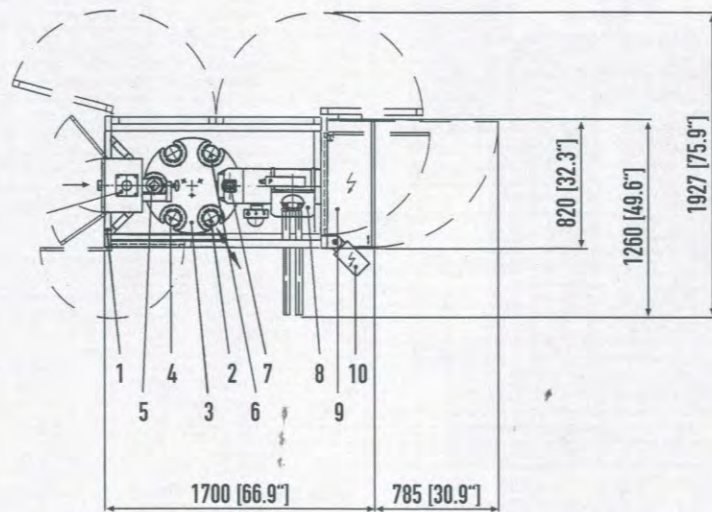
● Maximum benefit for our customers

We provide our customers with complete solutions which meet all their requirements and provide maximum productivity for many years.

Therefore our consulting service starts right from the beginning and we consider all relevant details to provide a tailor-made solution for each special case, i. e.: no two inks are the same.

The high-quality sturdy construction of the machines in combination with an easy trouble-shooting system and hotline support guarantee long-term production with highest availability. This is assisted by complete technical documentation and a perfectly organised spare parts service. Schwerdtel has built up a computerbased stock-keeping for all base spare parts and we live up to our promise when saying: „Spares ordered before lunch time will leave our company the same day“.

- 1 Frame
- 2 Loading and unloading station
- 3 Cartridge transport
- 4 Anti drying station for the inner wall of the cartridge with exhaust device
- 5 Filling and dosing station
- 6 Anti drying station for the ink surface with exhaust device
- 7 Plunger inserting station
- 8 Plunger feeding station
- 9 Switch cabinet
- 10 Control panel



● Schwerdtel: Complete solutions for the filling of pasty products

- Presses for pans, drums, pails
- Piston pumps
- Semi-automatic cartridge filling machines
- Fully-automatic cartridge filling machines, output 30 - 120 cartridges/minute
- Multi-component mixing and dosing units
- Semi- and fully-automatic case packers for cartridges
- Semi- and fully-automatic filling lines for cans, pails and drums
- Semi- and fully-automatic sealing machines for vacuum cans
- Customized solutions for each specific filling and packing problem

Technical Data			
Machine type	semi-automatic vertical cartridge filling and closing machine S 8-VDH		
Measurements (LxWxH)	appr. 1800 x 1300 x 3100 mm		
Total weight	appr. 900 kg		
Output	6 - 10 cartridges, depending on the dosing volume and product viscosity		
Drive (dosing unit)	pneumatic		
Cartridge type	RITTER	SONOCO	SONOCO
Filling weight	2 kg	5 lbs	8 lbs
Measurements (Ø x H)	99 x 330 mm	129 x 229 mm	129 x 346 mm
Product inlet height	appr. 1480 mm		
Electrical data			
Main voltage	400 V, 50 Hz or according to local requirements		
Power input	appr. 0.5 KW		
Control	Siemens S7 PLC		
Protection system	IP 44		
Compressed air connection			
Air pressure	min. 5 bar		
Air consumption	appr. 30 Nm ³ /h at an output of 6 cpm		

schwerdtel

Ludwig Schwerdtel GmbH
 Boschstrasse 8 · D-85757 Karlsfeld / München
 Phone +49(0)8131/90 06-0 · Fax +49(0)8131/972 11
 Email info@schwerdtel.de · Internet www.schwerdtel.de