

## Dosing Systems for In-line Mixing

# SD-3K / SD-7K

- Cost-efficient multi-component dosing system
- For catalysing / pigmenting
- Up to 7 components possible
- „Just-in-time“ production
- High output (up to 45 cartridges/min.)
- Reliable Schwerdtel dosing accuracy



## SD-3K / SD-7K Dosing Systems for In-line Mixing

### The Basic Machine

**Two machine versions** are available: One frame with 3 dosing cylinders ("SD-3K") or with 7 dosing cylinders ("SD-7K"). In both versions, the dosing cylinder in the centre feeds the base material. It is available for different volumes: 670 ml, 880 ml, 1100 ml.

**The component cylinders** of the SD-7K can be retrofitted in a modular way to both sides to handle a wider colour range.



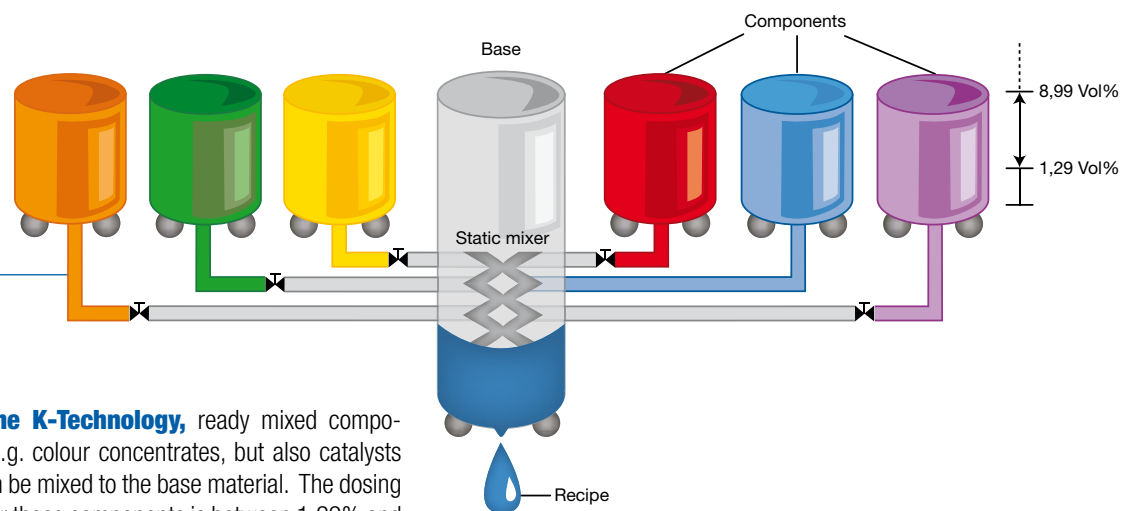
### The Supply Unit

**The supply unit** with integrated feeding pump refills the component cylinders. The feeding pump is screwed to the container. But it can also be used without container, e.g. in case of already existing tanks on-site.

**For complete functionality** we recommend the use of **Schwerdtel** containers. Integrated agitators prevent the sedimentation of particulate materials. Fully automatic level indicators allow an automatic re-filling.

**Even nitrogen gassing** (e.g. for catalysts) can be integrated. All these functions are then integrated in our control system.





**With the K-Technology**, ready mixed components (e.g. colour concentrates, but also catalysts etc.) can be mixed to the base material. The dosing range for these components is between 1,29% and max. 8,99%, relating to a basic volume of 670 ml.



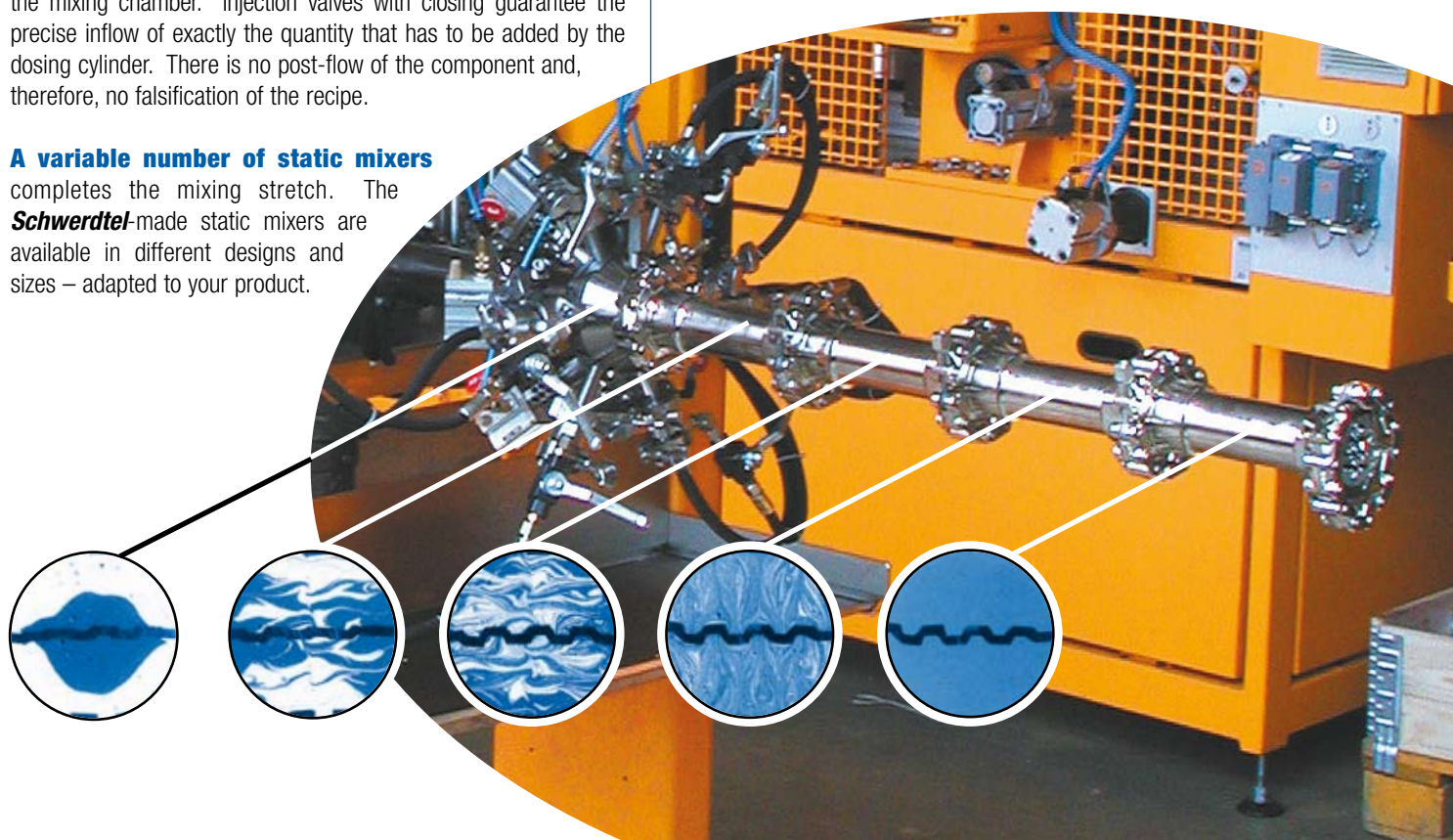
Colour change from white to grey

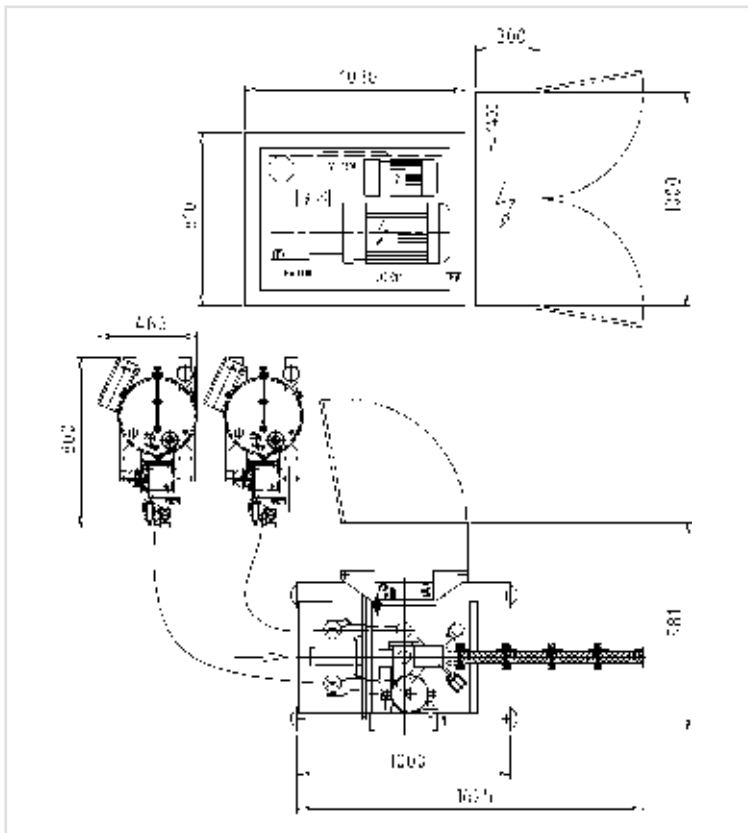
**Without any cleaning effort**, the change-over from one recipe to another takes place. The system is self-cleaning, and only after a few dosings you already achieve the final result and can continue the production.

## The Mixing Stretch

**All feedings of the components** are brought together in the mixing chamber. Injection valves with closing guarantee the precise inflow of exactly the quantity that has to be added by the dosing cylinder. There is no post-flow of the component and, therefore, no falsification of the recipe.

**A variable number of static mixers** completes the mixing stretch. The **Schwerdtel**-made static mixers are available in different designs and sizes – adapted to your product.





**Your Benefits:**

- ✓ High availability of the machine
- ✓ "First Aid" through our Service-Hotline: +49 8131 9006-49
- ✓ Excellent spare parts supply: Everything ordered until noon, will be delivered the same day
- ✓ Highest quality
- ✓ Tailor-made solutions

**Technical Data**

Machine type	SD-3K	SD-7K
Measurements (L x W x H)	approx. 1000 x 1000 x 3100 mm	approx. 1000 x 1550 x 3300 mm
Weight	approx. 900 kg	approx. 1300 kg
Output	up to 45 cartridges/min. (depending on product)	
Drive of dosing unit	hydraulic	hydraulic
Dosing range	up to 1100 ml	up to 1100 ml
Product inlet	1060 ±50 mm	1060 ±50 mm
<b>Electrical data</b>		
Main voltage	400 V, 50 Hz or according to local requirements	
Power input	approx. 18 kVA	approx. 18 kVA
Control	Siemens S7 PLC	Siemens S7 PLC
Protection system	IP 44	IP 44
<b>Compressed air connection</b>		
Air pressure	min. 6 bar	min. 6 bar
Air consumption	approx. 4 Nm <sup>3</sup> /h	approx. 5 Nm <sup>3</sup> /h
<b>Hydraulic</b>		
Measurements (L x W x H)	1030 x 810 x 1310 mm	1030 x 810 x 1310 mm
Weight	approx. 550 kg	approx. 550 kg
Max. hydraulic pressure	200 bar	200 bar
Oil requirement	250 l	250 l